



# Bathman Foam 19.023.01 C215

A relaxing and soft cleansing foam for the body



RICHNESS

PROCESS

APPLICATION



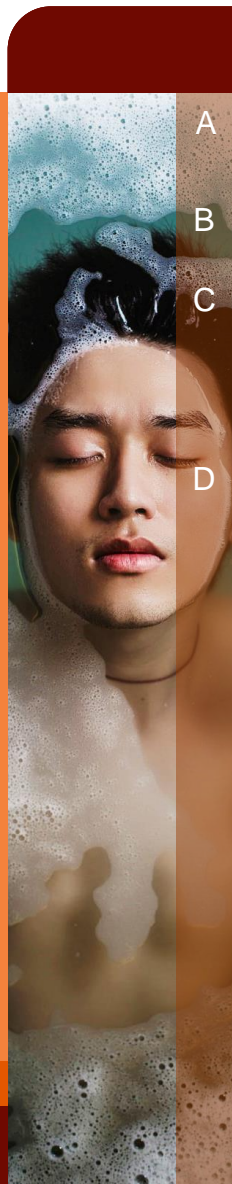
## FORMULATION FEATURES

- Creamy and smooth compact foam
- Sulfate free formulation
- Soft cleansing

## FUNCTIONAL INGREDIENTS

### Siligel™ (0.5%) – Gelling agent

- Silicone-like skin feel
- Triggers positive emotions and provides moment of happiness upon application



	INGREDIENT	INCI NAME	SUPPLIER	FUNCTION	%
A	Deionized Water Glycerin	Water Glycerin	- Interchimie	- Humectant	71.10 2.00
B	<b>Siligel™</b>	<b>Xanthan Gum (and) Lecithin (and) Sclerotium Gum (and) Pullulan</b>	<b>Lucas Meyer Cosmetics</b>	<b>Gelling agent</b>	<b>0.50</b>
C	Amisoft® CS 11 Dehyton® K COS  Plantacare® 2000 UP	Sodium Cocoyl Glutamate Cocamidopropyl Betaine  Decyl Glucoside	Ajinomoto BASF  BASF	Anionic surfactant Amphoteric surfactant Non-ionic surfactant	5.00 10.0  10.00
D	Verstabil® PC <b>Fresh Impulse</b>	Phenoxyethanol (and) Caprylyl Glycol <b>Fragrance</b>	Dr. Straetmans <b>IFF</b>	Preservative <b>Fragrance</b>	1.00 <b>0.40</b>

### Manufacturing Procedure: COLD PROCESS

1. Prepare phase A.
2. Sprinkle phase B into phase A and increase stirring up to maximum speed using a rotor-stator to develop the gel.
3. Add the ingredients of phase C one by one, under gentle stirring to avoid foaming.
4. Add D and keep under gentle stirring until homogeneous.
5. Adjust pH if necessary.
6. Pour into aerosols (95% formula/5% propellant).

### Formula Specifications:

Aspect: Opalescent gel  
 Viscosity (Brookfield LV, spindle 3, 30 rpm, 1 min):  
 300 - 400 cP  
 pH: 5.5 - 5.9  
 Centrifugation (3000 rpm, 20 min): Stable

**Stability Tests:** On lab batches, up to 300g  
 Up to 2 weeks at Room Temperature and 50°C  
 Freeze thaw cycles (24h at -18°C and 24h at  
 Room Temperature)  
 Centrifugation (3000 rpm, 20 min): Stable  
 Vibrating table (400 rpm, 4h): Stable

SPRAY